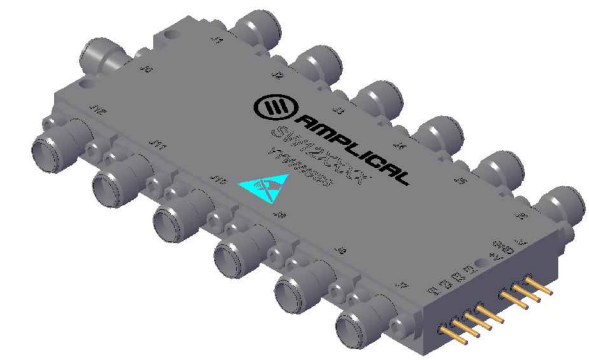
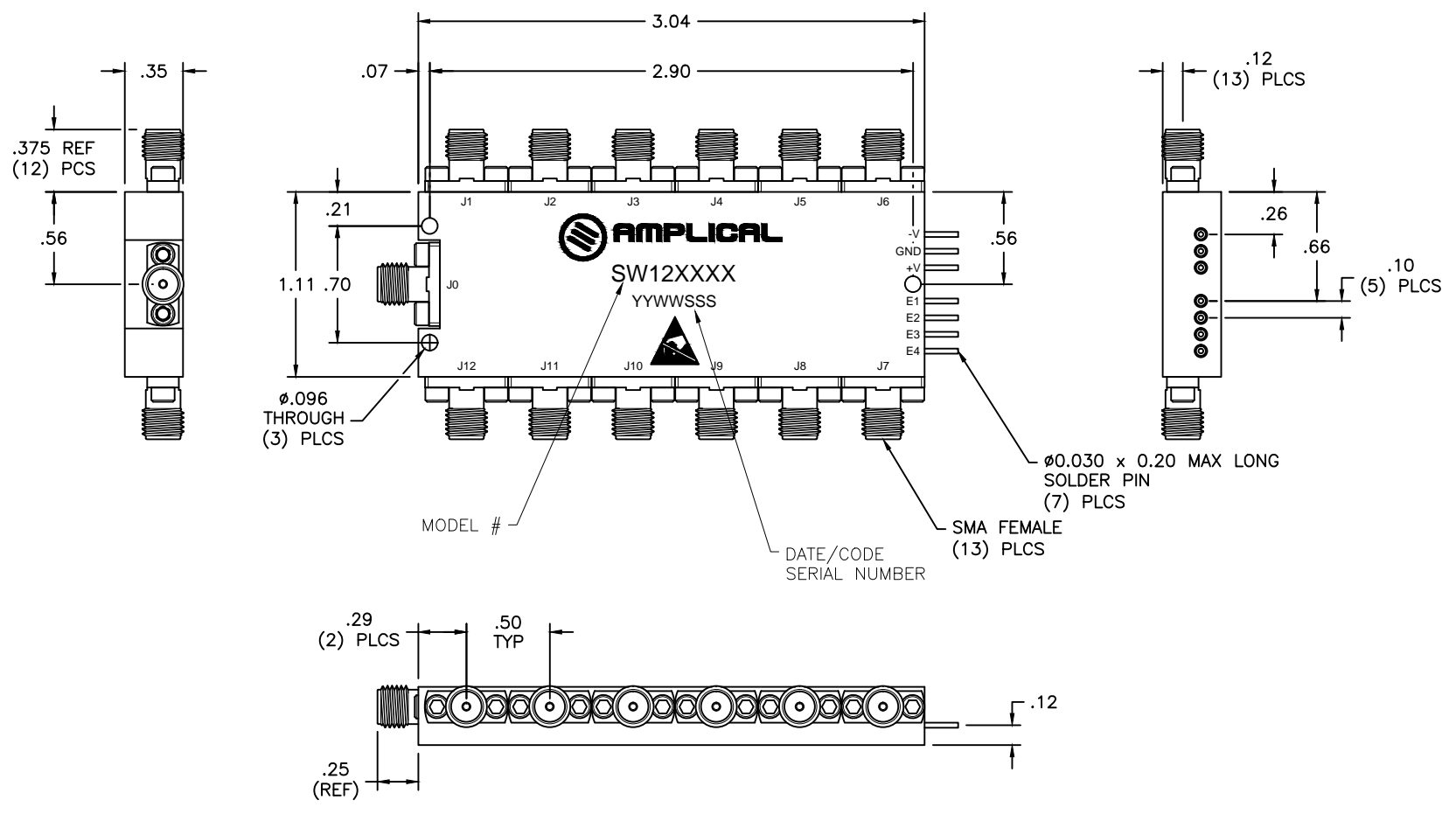



REVISIONS				
ZONE	LTR	DESCRIPTION	DATE	APPROVED
-	-	-	-	-



VIEW NOT TO SCALE

- NOTES:
- 1-FINISH: ALBALLOY
 - 2-CONNECTOR: SMA FEMALE PER MIL-PRF-39012, PASSIVATED STAINLESS STEEL.
 - 3-SOLDER PIN FINISH: GOLD PLATE PER MIL-PRF-45204.
 - 4-J0 IS THE COMMON PORT.
 - 5-REFER TO INDIVIDUAL PRODUCT INFORMATION DATA SHEET FOR DETAIL SPECIFICATIONS.

UNLESS OTHERWISE SPECIFIED DIMENSIONS ARE IN INCHES TOLERANCES: ANGLES ± 1° DECIMALS: .XX=±.XX .XXX=±.XXX CONCENTRICITY: .004 T.I.R. SURFACE FINISH 63√ BREAK ALL EDGES	SIGNED	DATE	 20 TROY ROAD WHIPPANY, NJ 07981 973-386-1119 FAX 1-973-386-1131							
	DRAWN BY	AAW				5/11/15				
	CHECKED BY			TITLE SW12-1 SWITCH OUTLINE						
	DSGN ENG APPROVAL	RG	5/11/15							
	PROPC ENG APPROVAL	EG	5/11/15	SIZE	CODE IDENT NO	DRAWING NO	REV			
Q.A. APPROVAL	AB	5/11/15	B	4A1K5	OL-SW12-1	-				
MFG MGR APPROVAL	JH	5/11/15	SCALE	1/1	FILE NO	FILE	SHEET	X	OF	X
MODEL NUMBER	MODEL									